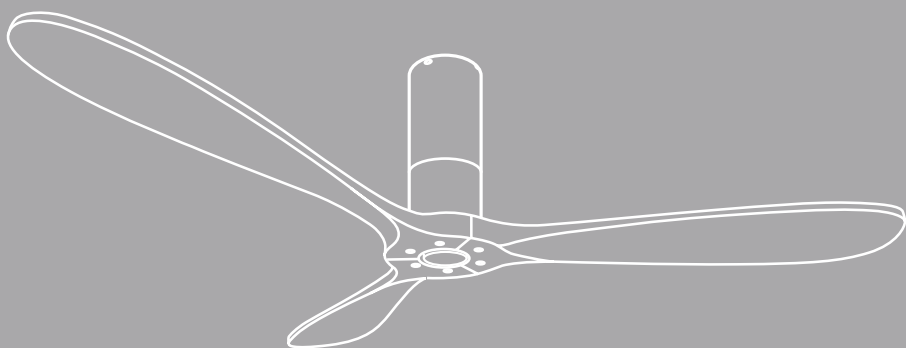


CREATE

WIND TUBE



CEILING FAN WITHOUT LIGHT

MANUAL ASSEMBLY

[illegible]

[illegible]



EN

To download this user guide in your language, visit our website:
www.create-store.com/uk



ES

Para descargar el manual en su idioma, visite nuestra web:
www.create-store.com/es



PT

Para baixar o manual no seu idiomas, visite nosso site:
www.create-store.com/pt



FR

Pour télécharger le manuel dans votre langue, visitez notre site Web:
www.create-store.com/fr



IT

Per scaricare il manuale nella sua lingua, visitare il nostro sito Web:
www.create-store.com/it



DE

Um das Handbuch in Ihrer Sprachen herunterzuladen, besuchen Sie unsere Website:
www.create-store.com/de



NL

Bezoek onze website om de handleiding in uw taal te downloaden:
www.create-store.com/nl



PL

Aby pobrać instrukcję w swoim języku, odwiedź naszą stronę internetową:
www.create-store.com/pl



INDEX

Box contents	6
Step 1. Wood roof	7
Step 1. Concrete ceiling	8
Step 1. False ceiling	10
Step 2. Driver connection	11
Step 3. Anchor the motor to the ceiling	13
Step 4. Blade assembly	14
Blade balancing kit	15

BOX CONTENTS

A



MOUNTING SUPPORT

B



DRIVER

C



(x3) BLADES

D

(1) EXPANSION SCREWS



(2) WOOD SCREWS



E



REMOTE CONTROL

F



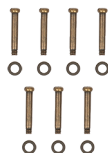
ENGINE

G



BASIC SCREWS
ENGINE

H



BLADE SCREWS

I



SPlicing TERMINALS

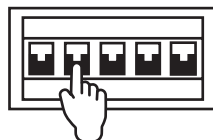
J



BALANCING KIT

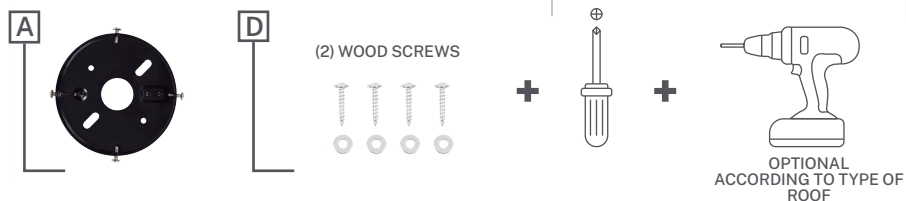


ATTENTION! Before starting the assembly, remember to disconnect the light from the electrical panel so as not to suffer an electric shock.

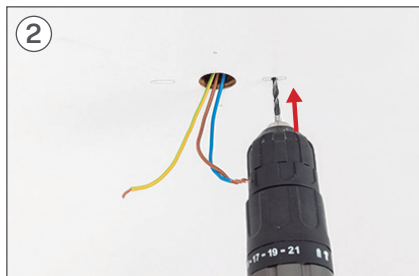


STEP 1. WOOD ROOF

PARTS AND TOOLS



Mark with a pencil on the ceiling the 4 holes of the piece A.



If necessary, depending on the type of roof, you will need to use a drill to make the hole in the wood.



Place the washer and then the screw D2 with the help of the screwdriver.



Repeat this step on the remaining 3 holes.

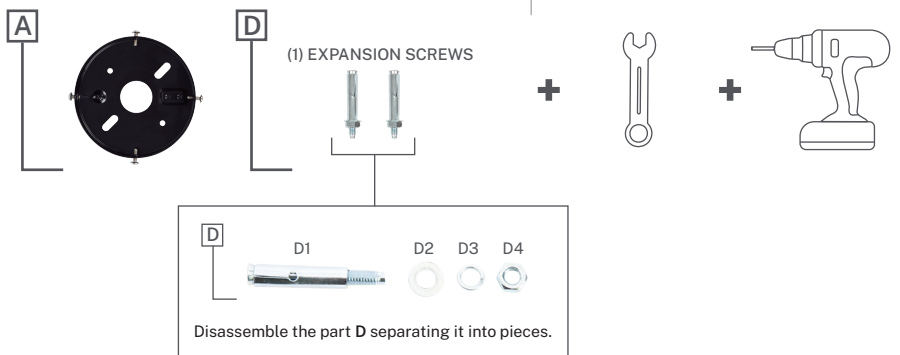


Make sure the part A is perfectly hooked to the ceiling with the screws well tightened.

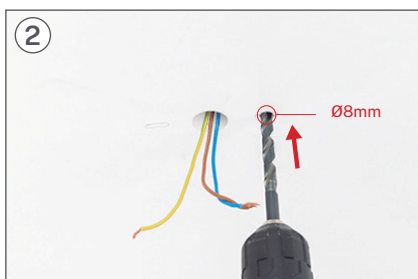
STEP 1. CONCRETE CEILING

PARTS AND TOOLS

MATERIAL NOT INCLUDED



Mark with a pencil 2 parallel holes using the part A as a guide.



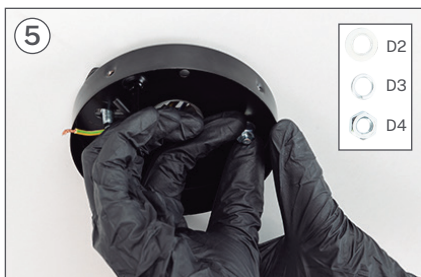
With the help of a drill, make the two corresponding holes with a Ø8 mm bit.



insert the pieces D1 in the ceiling holes.



place the piece A matching their holes with the screws D. Make sure that the cables from the ceiling go through the center hole of the piece A.



Enter the part in order **D2**, **D3** and then the nut **D4**.



Tighten the part **D4** with a No. 10 spanner, until you notice that it is well fixed.



Make sure the part **A** It is perfectly hooked to the ceiling.

STEP 1. FALSE CEILING

PARTS AND TOOLS

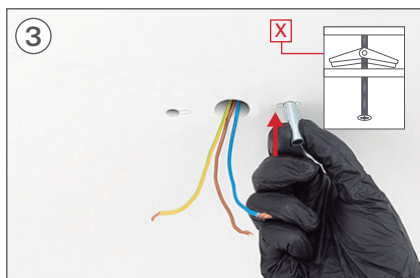
MATERIAL NOT INCLUDED



Mark on the ceiling with a pencil 2 parallel holes using the piece A as a guide.



With the help of a drill make the two corresponding holes.



Insert the fixing screws into the holes and make sure that the lever opens.

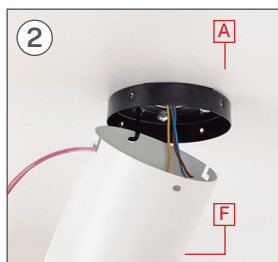
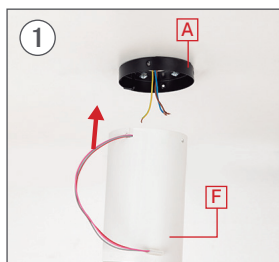
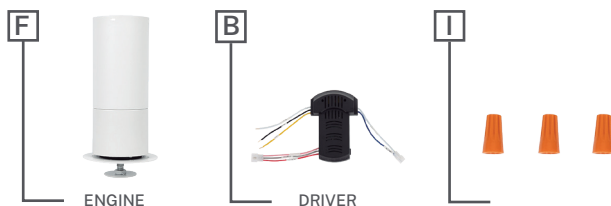


Place the piece A and screw the fixing screws to the false ceiling.



Make sure the part A is perfectly attached to the ceiling.

STEP 2. DRIVER CONNECTION



Insert the piece hook **A** in a hole in the piece **F** so that the motor hangs and facilitates the connection of the cables.



Join the connections of the piece **F** with those of the piece **B**, each with its corresponding color.



Select and connect all ground wires, including your installation.

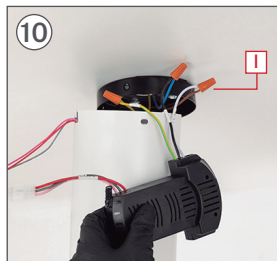
Once connected, place the part **I** screwing it in until it is secure.



Connect the PHASE cable of the driver (AC-L) to the PHASE cable of your installation. Once connected, place the part I.



Connect the NEUTRAL cable of the driver (AC-N) to the NEUTRAL cable of your installation.

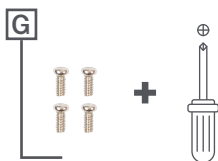


Once connected, place the part I screwing it in until it is secure.



Once the cables are connected, insert the part B inside the piece F, As shown in the picture.

STEP 3. ANCHOR THE MOTOR TO THE CEILING



Use 2 screws G and screw them, without tightening them too much, into the parallel holes of the piece A.



Take out the piece F of the hook and fit it on the piece A without pinching any wires.

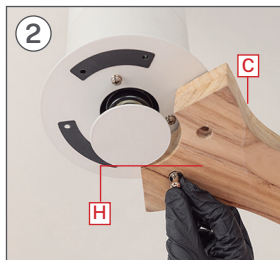
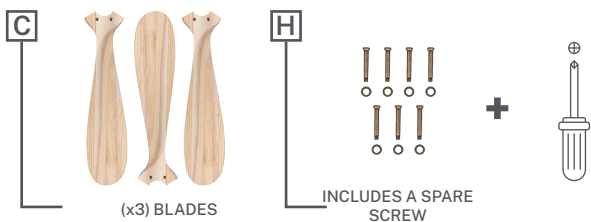


Once engaged in the hole, rotate the part F to the right and check that it fits correctly without pinching any cables.



Once the piece is fitted F, install the 2 screws G into the remaining holes by tightening them with the screwdriver. Then tighten the first 2 screws so that the motor is secure.

STEP 4. BLADE ASSEMBLY



Place the first blade **C** fastening it with the washers and the screws **H** with the help of the screwdriver, without tightening them too much, to be able to put the rest.



Do the same step with the second and third blade **C**. Once all the blades are placed **C**, screw all the screws well **H** so that the blades are well attached.



You can now reconnect the light in the electrical panel and enjoy your new ceiling fan.

BLADE BALANCING KIT

J



BALANCING KIT

Your ceiling fan may have blade swing problems when in operation due to irregularities in the blades or brackets. Also, incorrect system mounting or crooked bearings could cause additional problems. The following procedure is recommended to remedy these problems:

1. Make sure the blades are firmly screwed to their brackets.
2. Make sure all blades are firmly secured to the center swivel casing and check the inclination of the blade mounts, they should all be the same.
3. Standing under the fan and looking up, check that none of the blade supports are bent so that none of the blades are misplaced. You can correct the position of the blade holders by gently bending them to the correct position.
4. You can check the height of the blades with a simple school ruler. Place the ruler against the ceiling vertically and level with the outside of the blade tip. Check the distance from the blade tip to the ceiling, carefully rotate the blades by hand and check the rest of the blades. If the blades are not aligned, you can carefully bend the blade holder up or down slightly to align with each other.

If the balance problem is not solved even by following the steps above, you must perform a dynamic balance using the kit provided. Follow the procedure below:

1. Turn on the fan and set the speed at which the greatest sway is created (usually occurs at the highest speed).
2. Turn off the fan. Select a blade and place the balancing clip, midway between the bracket and the tip, on the rear edge of the blade.
3. Turn on the fan. Wait to see if the sway has improved or worsened. Turn the fan off again and attach the clip to another blade to retest. Repeat this process with all the blades and check which one has improved the most.
4. Place the clip on the blade that has improved the most. Move it in or out of the blade and run the fan to find the best position where the clip offers the greatest roll improvement.
5. Then remove the clip and install a balancing weight on top of the blade on the center line near the point where the clip was placed. Use a knife or blade if necessary to separate the weights.

Watch out: Stand at a safe distance from the blades. If the clip has not been properly secured, for any reason, you could be injured.

CREATE