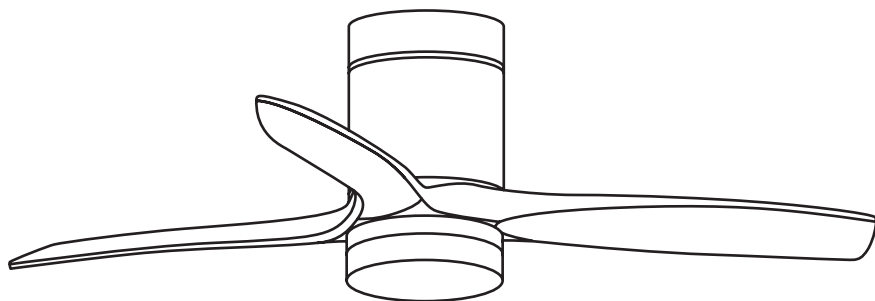


CREATE



Wind Calm Patio

Manual assembly

CREATE



EN

To download this user guide in your language, visit our website:
www.create-store.com/uk



ES

Para descargar el manual en su idioma, visite nuestra web:
www.create-store.com/es



PT

Para baixar o manual no seu idiomas, visite nosso site:
www.create-store.com/pt



FR

Pour télécharger le manuel dans votre langue, visitez notre site Web:
www.create-store.com/fr



IT

Per scaricare il manuale nella sua lingua, visitare il nostro sito Web:
www.create-store.com/it



DE

Um das Handbuch in Ihrer Sprachen herunterzuladen, besuchen Sie unsere Website:
www.create-store.com/de



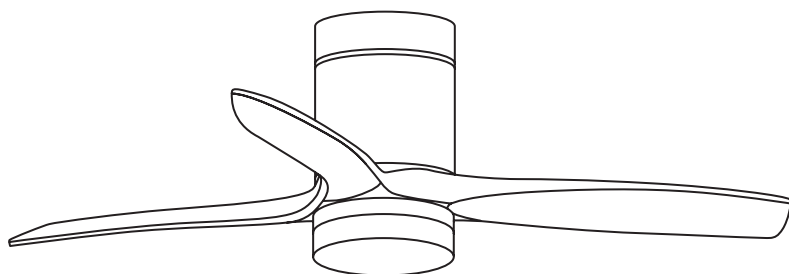
NL

Bezoek onze website om de handleiding in uw taal te downloaden:
www.create-store.com/nl



PL

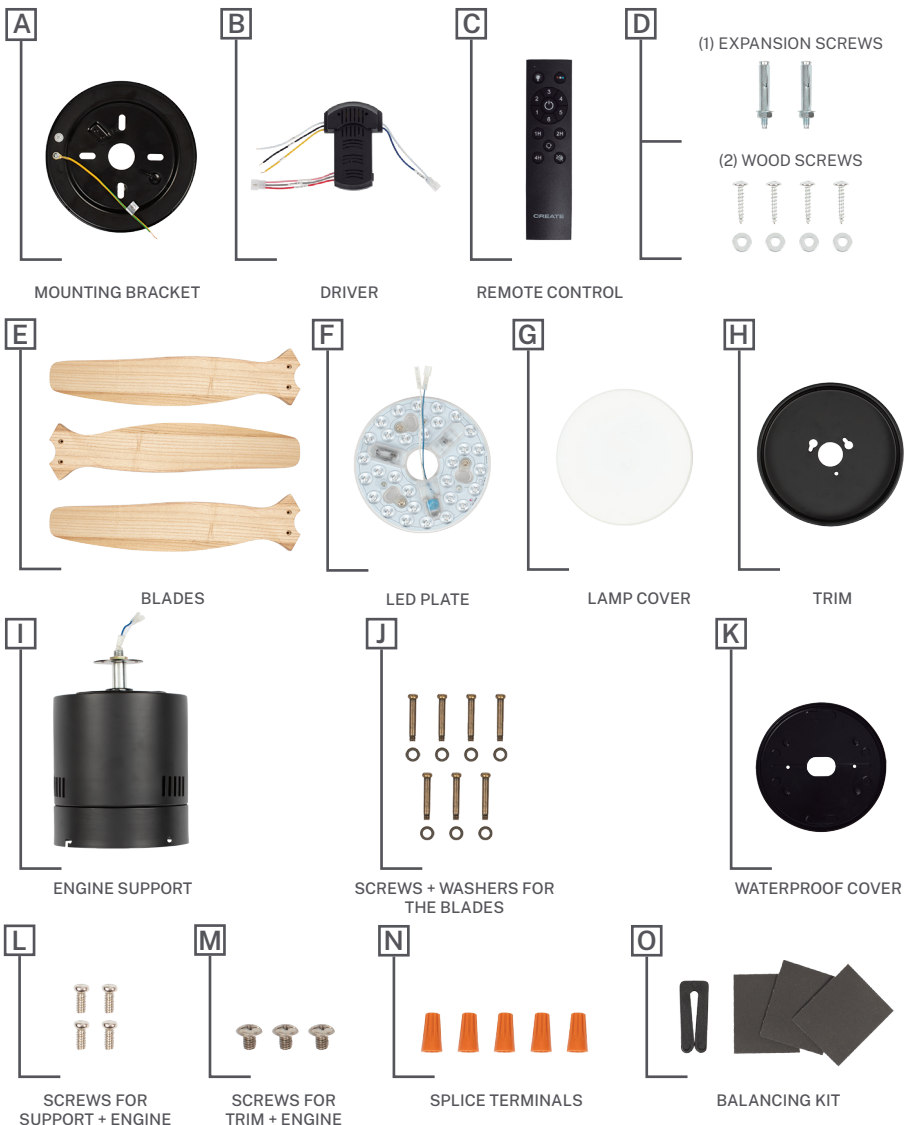
Aby pobrać instrukcję w swoim języku, odwiedź naszą stronę internetową:
www.create-store.com/pl



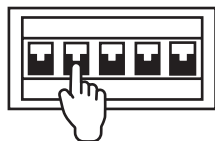
INDEX

Parts list with light	4
Step 1. Wood roof	5
Step 1. concrete roof	6
Step 1. False ceiling	8
Step 2. Driver connection	9
Step 3. Anchoring the motor to the ceiling	11
Step 4. Assembly of the blades	12
Step 5. Placement of the trim	13
Step 6. LED board connection	14
Step 7. Attaching the lamp cover	15
Wall controller installation	16
Blade balancing kit	18

PARTS LIST WITH LIGHT

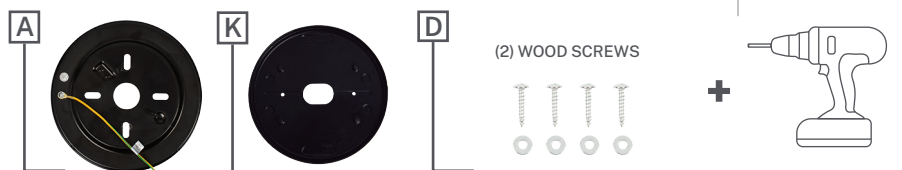


ATTENTION! Before starting the assembly, remember to disconnect the light from the electrical box to avoid suffering an electric shock.



STEP 1. WOOD ROOF

PARTS AND TOOLS



Mark with a pencil the 4 holes of the piece A in the roof.



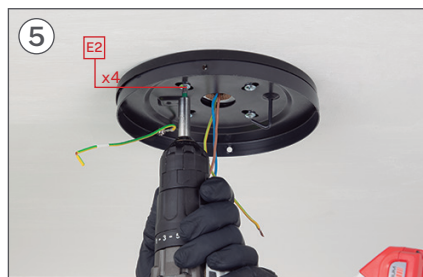
If necessary, depending on the type of roof, you will need to use a drill to make the hole in the wood.



Fit part K into part A.



Position the assembly on the ceiling, leaving the cables protruding from the centre.



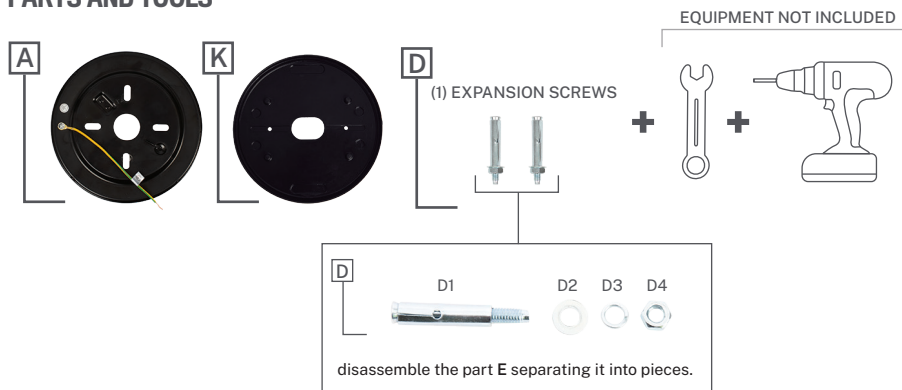
Fit the washers and then the E2 screws with the aid of the drill to fix the assembly to the ceiling.



Make sure that it is perfectly fixed to the ceiling.

STEP 1. CONCRETE ROOF

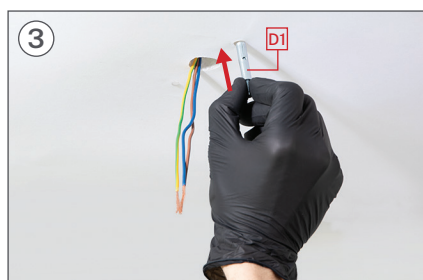
PARTS AND TOOLS



Mark 2 parallel holes with a pencil using part K as a guide.



Using a drill, drill the two corresponding holes with a Ø8 mm drill bit.



Insert the parts D1 into the holes in the ceiling.



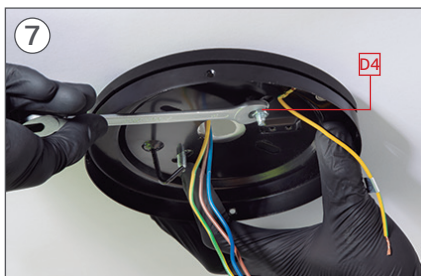
Fit piece K into piece A.



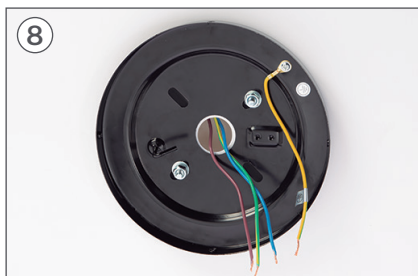
Position the assembly on the ceiling by matching its holes with the screws, leaving the cables protruding through the central hole.



Insert in order the part D2, D3 and then the nut D4.



Tighten the part D4 with a #10 spanner until you feel that it is well fixed.



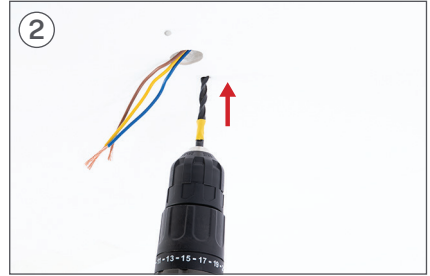
Make sure that the assembly is securely attached to the roof.

STEP 1. FALSE CEILING

PARTS AND TOOLS



Mark 2 parallel holes with a pencil using part K as a guide.



Using a drill, drill the two corresponding holes.



Insert the fixing screws into the holes and make sure that the lever opens.



Fit part K into part A.



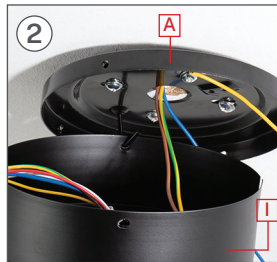
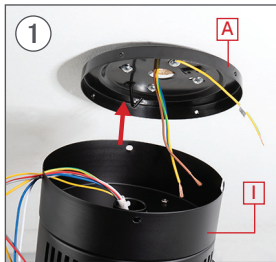
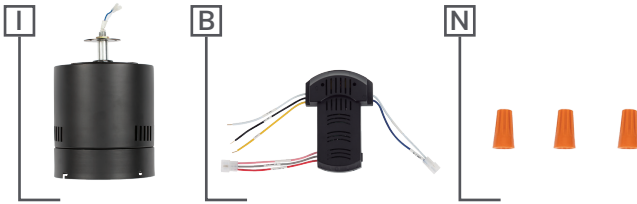
Position the A-K assembly and screw the fixing screws to the false ceiling.



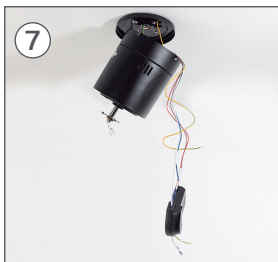
Make sure that the parts are securely fastened to the ceiling.

STEP 2. DRIVER CONNECTION

PARTS AND TOOLS



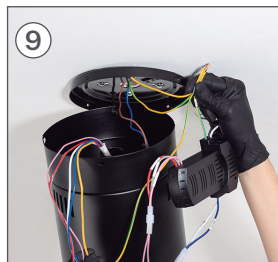
Join the connections of the part **I** with those of the piece **B**, each with its corresponding color.



Check that the central structure is well placed.



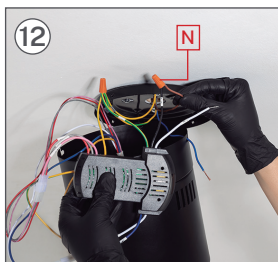
Select and connect all ground wires, including the one for your installation.



Once connected, place the piece **N** screwing it in until it is secure.



Connect the PHASE cable of the driver (AC-N) to the NEUTRAL cable of your installation.



Once connected, place the piece **N** screwing it in until it is secure.



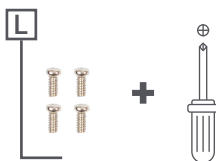
Connect the NEUTRAL cable of the driver (AC-L) to the PHASE cable of your installation. Once connected, place the piece **N**.



Once the cables are connected, insert the part **B** inside the piece **I**. As shown in the picture.



STEP 3. ANCHORING THE MOTOR TO THE CEILING



Use 2 screws **L** and screw them, not too tightly, into the parallel holes in the part **A**.

Remove the piece from the hook **I** and fit it into the piece **A** without pinching any wires.

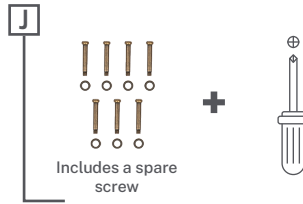
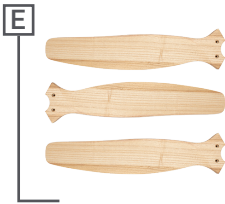


Once attached to the hole, turn the piece **I** to the right and check that it is seated correctly without pinching any wires.



Once the part is fitted input the 2 screws **L** in the remaining holes by tightening them with the screwdriver. Then tighten the first 2 screws so that it is secure.

STEP 4. ASSEMBLY OF THE BLADES



With the motor well placed, we will begin the assembly of the blades E.



Place the first blade **AND** holding it with washers and screws J with the help of the screwdriver, without tightening them too much, to be able to put the rest.

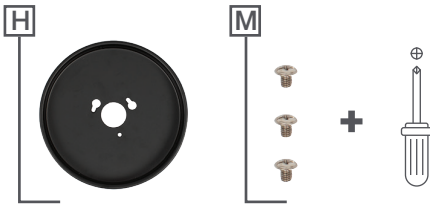


Do the same step with the second and third blade E. Remember not to screw the screws to the maximum.

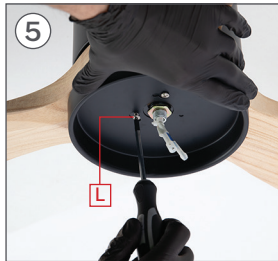
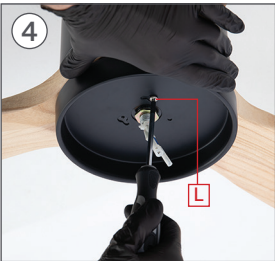


Once all the blades are in place E screw all the screws well J so that the blades are well attached.

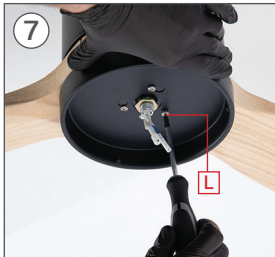
STEP 5. PLACEMENT OF THE TRIM



To place the part H Pass the fan wires through the center hole squaring the 2 holes with those of the center bracket.

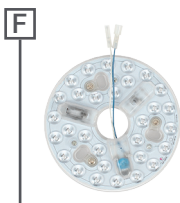


Screw in the screws L in the two large holes of the piece H without pressing too much. Then turn the piece H to the right so that it is perfectly seated and aligned with the third hole.

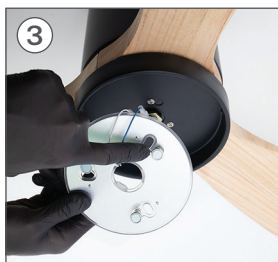


Once the part is attached H screw in the last screw L and tighten the rest so that the piece is attached to the fan.

STEP 6. LED BOARD CONNECTION

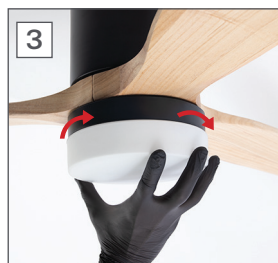
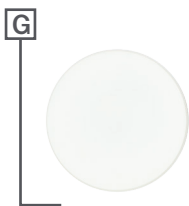


Connect the wires of the part F to those of the fan joining the connections, each one with the same color.

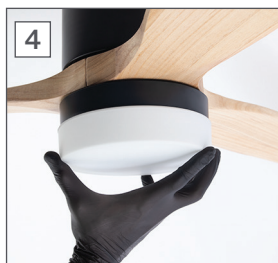


Then attach the part F to the fan through the magnets so that it stays in place.

STEP 7. ATTACHING THE LAMP COVER



Place the piece **G**. on the fan and secure it by turning clockwise.

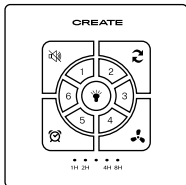


Don't forget to check that the part **G** it stays well attached. Once verified, you will be able to connect the electricity and enjoy your new fan with light.

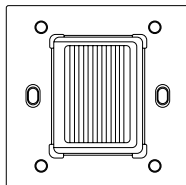
WALL CONTROLLER INSTALLATION

Through our store you can buy the wall controller separately. Follow the instructions below for assembly.

PARTS LIST



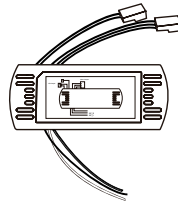
Controller



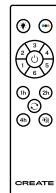
Clamping bracket



Screws



Driver



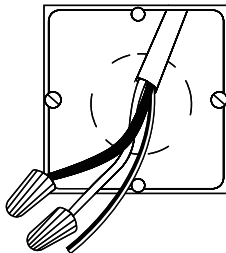
Command

MOUNTING THE WALL CONTROLLER WITH LIGHT

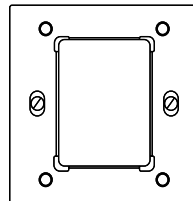
BRACKET FIXING AND CONTROLLER MOUNTING

Use a switch close to the fan to which you are installing the controller.

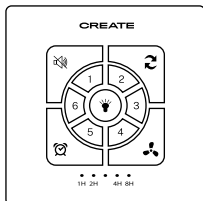
1



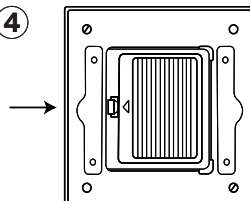
2



3



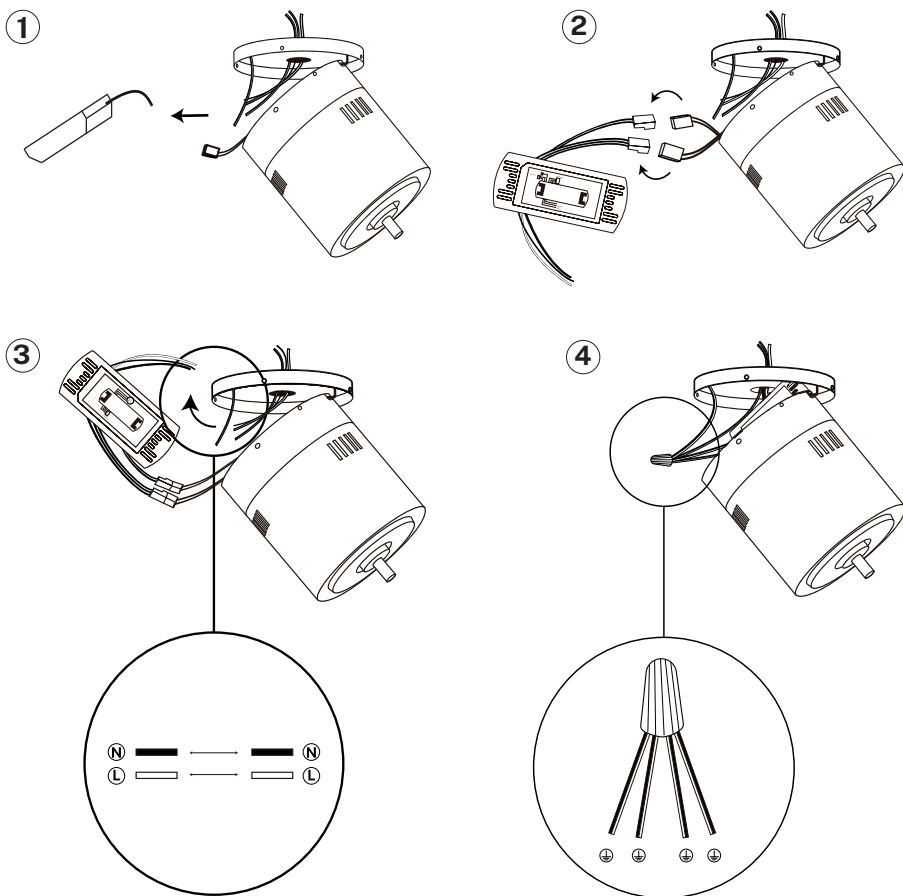
4



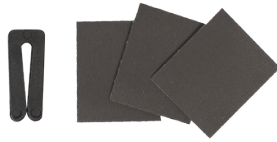
1. Disassemble the switch and terminate the L and N wires separately.
2. Hide the wiring well and place the support bracket with the help of the screws that you will find in the package.
3. Next, attach the controller which will be attached with the help of the magnets.
4. Remove the cover on the back of the controller to insert two AAA batteries and close the cover.

CONTROLLER CONNECTION TO FAN

1. To access the controller of your ceiling fan you must remove the two side screws as shown in the image. Once you access the driver, disconnect all wiring and remove the driver from the fan motor.
2. Connect the fan motor wires with the driver motor output wires and the Driver light output wires with the LED motor wires by matching the connections in their correct position.
3. Connect the N wire from your home to the N wire of the controller and the L wire from your home to the L wire from the driver.
4. If your home has a grounding cable, connect all the grounding cables, both from the fan and from the driver and from the support with the one from your home.
5. Once the new controller is installed, mount the fan again. Once assembled correctly, connect the electricity to enjoy your new controller.



BLADE BALANCING KIT



Your ceiling fan may have blade swinging issues when it is running due to irregularities in the blades or brackets. Also, incorrect mounting of the system or crooked bearings could cause additional problems. The following procedure is recommended to remedy these problems:

1. Make sure the blades are firmly bolted to their brackets.
2. Make sure all blades are securely attached to the center swivel housing and check the pitch of the blade holders, they should all be the same.
3. Standing under the fan and looking up, check that none of the blade brackets are bent so that none of the blades are misplaced. You can correct the position of the blade holders by gently bending them into the correct position.
4. You can check the height of the blades with a simple school ruler. Place the ruler against the ceiling vertically and level with the outside of the blade tip. Check the distance from the tip of the blade to the ceiling, rotate the blades carefully by hand and check the rest of the blades. If the blades are not aligned, you can carefully bend the blade bracket up or down slightly to align with each other.

If the balance problem is not resolved even by following the steps above, you should perform dynamic balancing using the provided kit. Follow the procedure below:

1. Turn on the fan and adjust the speed at which the most rocking is created (normally occurs at the highest speed).
2. Turn off the fan. Select a blade and place the balance clip, halfway between the bracket and the tip, on the trailing edge of the blade.
3. Turn on the fan. Wait to see if the sway has improved or worsened. Turn the fan off again and place the clip on another blade to recheck. Repeat this process with all the blades and see which one has improved the most.
4. Place the clip on the blade that has improved the most. Move it in or out of the blade and crank the fan to find the best position where the clip offers the most balance improvement.
5. Then remove the clip and install a balance weight on top of the blade on the centerline near the point where the clip was attached. Use a knife or blade if necessary to separate the weights.

Careful: Stand at a safe distance from the blades. If the clip has not been secured correctly, for whatever reason, you could be injured.

[illegible]

CREATE