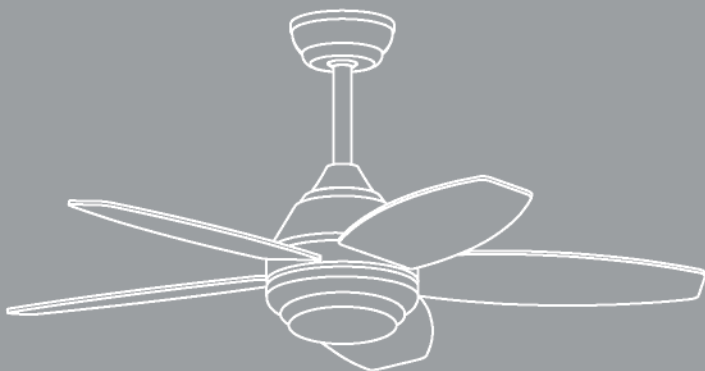
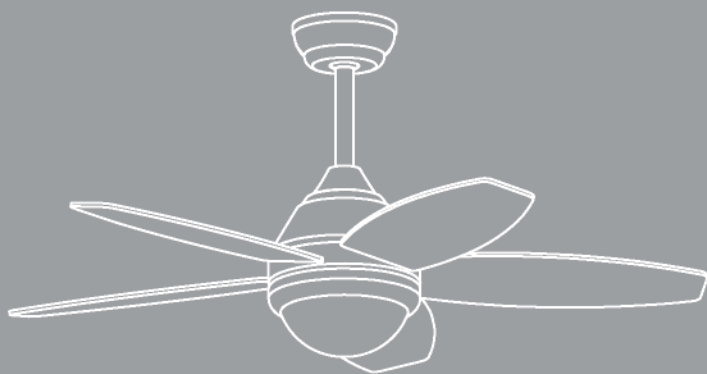


CREATE

FLOWOOD STYLANCE



CEILING FAN WITH OR WITHOUT LIGHT

ASSEMBLY MANUAL

[illegible]

[illegible]



EN

To download this user guide in your language, visit our website:
www.ikohs.com/uk



ES

Para descargar el manual en su idioma, visite nuestra web:
www.ikohs.com/es



PT

Para baixar o manual no seu idiomas, visite nosso site:
www.ikohs.com/pt



FR

Pour télécharger le manuel dans votre langue, visitez notre site Web:
www.ikohs.com/fr



IT

Per scaricare il manuale nella sua lingua, visitare il nostro sito Web:
www.ikohs.com/it



DE

Um das Handbuch in Ihrer Sprachen herunterzuladen, besuchen Sie unsere Website:
www.ikohs.com/de



NL

Bezoek onze website om de handleiding in uw taal te downloaden:
www.ikohs.com/nl



PL

Aby pobrać instrukcję w swoim języku, odwiedź naszą stronę internetową:
www.ikohs.com/pl

THIS MANUAL IS FOR ALL FLOWOOD STYLANCE MODELS



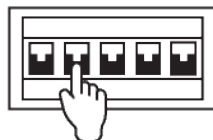
INDEX

Box content	6
Step 1. Wood ceiling	7
Step 1. Concrete ceiling	8
Step 1. False ceiling	10
Choice of height	11
Step 2. Main body assembly	12
Step 3. Ground connection	14
Step 4. Driver connection	15
Step 5. Assembling the blades	17
Step 6. Placing the decorative element	18
OPTION WITH LED KIT	
Step 7. Led plate connection	19
Step 8. Placing the lamp cover	20
OPTION WITHOUT LED KIT	
Step 7. Placing the decorative cover	21
Blade balancing kit	22

BOX CONTENTS

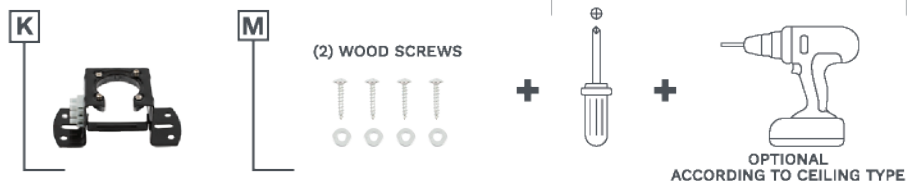


ATTENTION! Before starting the assembly, remember to disconnect the light from the electrical panel so as not to suffer an electric shock.



STEP 1. WOOD CEILING

PARTS AND TOOLS



Mark on the ceiling with a pencil the 4 holes of piece K.



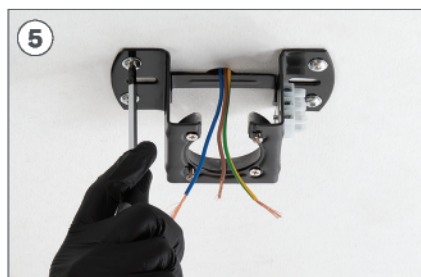
If necessary, depending on the type of ceiling, you will need to use a drill to make the hole in the wood.



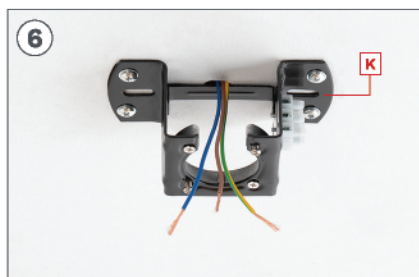
Place the washer and then the screw M2.



Using the screwdriver, tighten the screw M2.



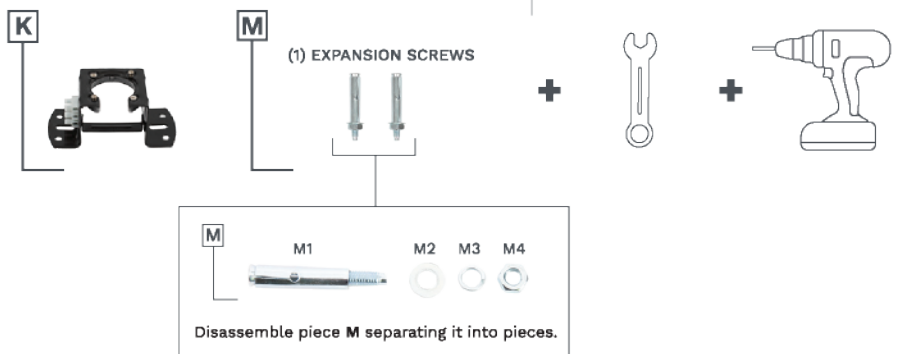
Repeat the previous step for the remaining holes.



Make sure that piece K is perfectly fixed to the ceiling and that no wires are trapped.

STEP 1. CONCRETE CEILING

PARTS AND TOOLS



Mark on the ceiling with a pencil the 2 central holes of piece **K**, using the same piece as a guide.



With the help of a drill, make the two corresponding holes with an Ø8 mm drill bit.



Place the pieces **M1** in the holes on the ceiling.



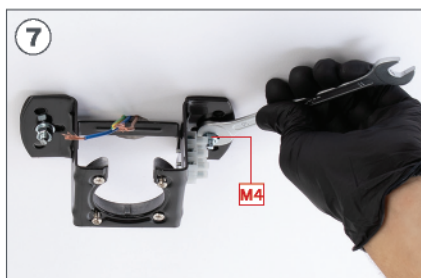
Only the thread of the screw should stick out.



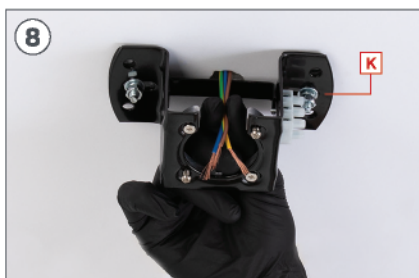
Place part **K** matching its holes with the screws **M1**. Make sure the ceiling wires are placed on one side of piece **K**.



Insert pieces **M2**, **M3** and subsequently the nut **M4**.



Tighten piece **M4** with a # 10 wrench, until you feel that it is well fixed.



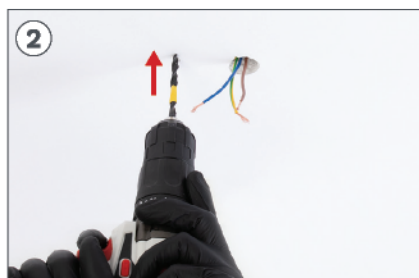
Make sure that piece **K** is perfectly hooked to the ceiling and that no wires are trapped.

STEP 1. FALSE CEILING

PARTS AND TOOLS



Mark on the ceiling with a pencil the 2 central holes using piece K as a guide.



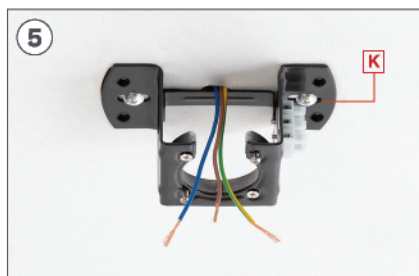
With the help of a drill, make the two corresponding holes.



Insert the fixing screws into the holes and make sure the lever opens.

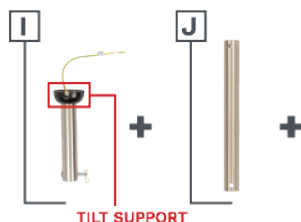


Place piece K and screw the fixing screws to the false ceiling.



Make sure that piece K is perfectly attached to the ceiling to continue with the assembly.

CHOICE OF HEIGHT

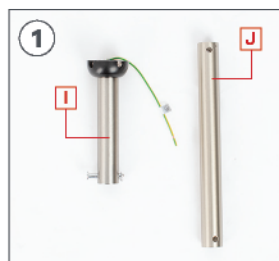


Before you start, choose the desired height.
(10cm +/-)

You will have to choose between the height of piece **I** or piece **J**.

- If you choose the height of piece **J**, you should follow the instructions below.

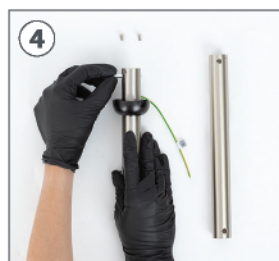
- If you choose the height of piece **I**, go directly to step 2 (page 12).



Using a screwdriver, remove the two screws from the tilt support of bar **I**.



Slide the tilt support down.



Remove the pin from the tilt support.



Remove the tilt support from the bar **I**.



Remove the locking piece from the bar **I** pin.



Gently pull the pin out of bar **I**.



Attach the tilt support to bar **J**.



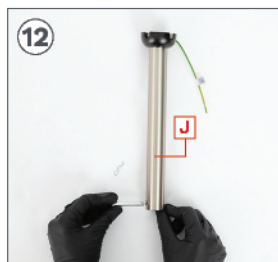
Place the tilt support pin into bar **J**.



Fit the tilt support onto the pin.



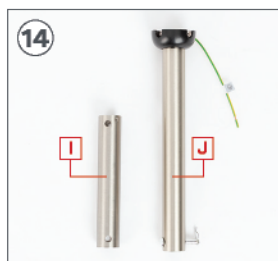
Tighten the two screws on the tilt support with the screwdriver.



Put the pin back into part J.

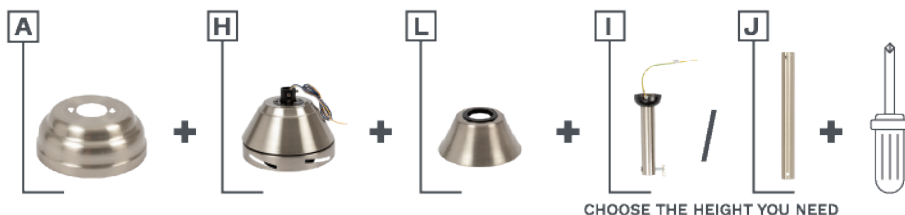


Secure the pin with the locking piece so that it does not come out.



Piece J will be ready to be used.

STEP 2. MAIN BODY ASSEMBLY



Remove the pin from part I or J, according to the chosen height.



Insert the chosen bar through the hole in part A.





Insert part **L** as shown in the image.



Once the pieces **A** and **L** are inserted, you must insert the wires of part **H** inside the bar. If you want, you can tape the wires down to make it easier to run them inside the bar.



With the help of a screwdriver, remove the 2 screws at the top of piece **H**.



Insert the bar at the top of piece **H**.



Make sure no wires are pinched.



Once the bar is inserted, place the pin of piece **I/J** so that it matches the hole in the bar.



Place the locking piece on the pin so that it does not come off.

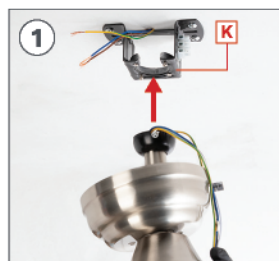


Then replace the two screws so that the bar is fully secured.

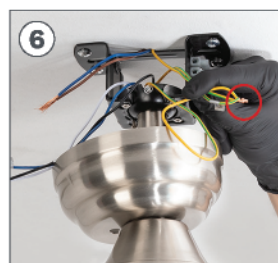


Once the bar is well anchored to piece **H**, slide piece **L** down. The main frame of the fan motor will remain assembled.

STEP 3. GROUND CONNECTION



Place the tilt support into the slot on the part **K** so that it is attached to the ceiling. Remember to put the notch of the black top of the tilt support backwards so that the piece fits properly.



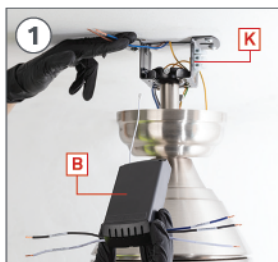
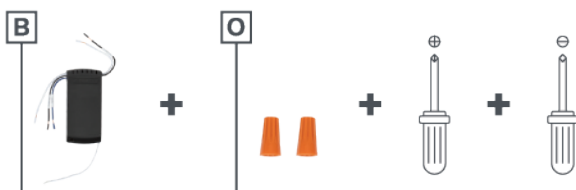
Before continuing, check that the center frame is securely positioned so that it does not fall.

Connect ground wire in piece **K** to that of the motor. In addition, if your electrical installation has its own grounding wire, also connect it to the wires of part **K** and the motor.



Once connected, place piece **O** screwing it in until it is secured.

STEP 4. DRIVER CONNECTION

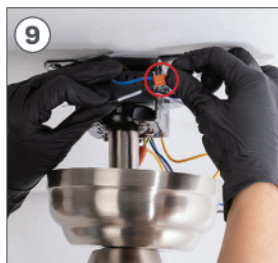
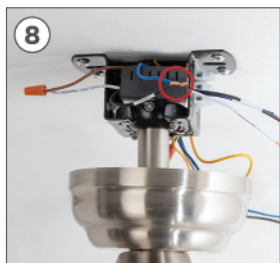


Insert part **B** in the groove of piece **K**. Check that all wires are correctly placed without being trapped.



Connect the LINE (L) wire from the ceiling to the white wire from piece **B**.

Once connected, place piece **O** screwing it in until it is secure.



Connect the NEUTRAL wire (N) from the ceiling to the black wire from piece **B**. Once connected, place piece **O** screwing it in until it is secure.



Then, with the help of a flat screwdriver, connect the remaining wires of piece **B** to those of the fan, joining each one with the strip and its respective colour.



Slide part **A** up to fit the screws protruding from piece **K**.

Once fitted, turn piece **A** to the right.

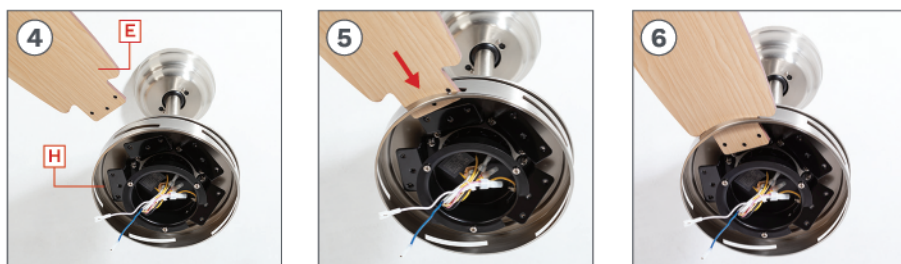


Finally, with the help of a screwdriver, tighten the screws so that the piece is well fixed.

STEP 5. ASSEMBLING THE BLADES



Remove the 15 screws from the bottom of piece **H** to be used later in the assembly of the blades.

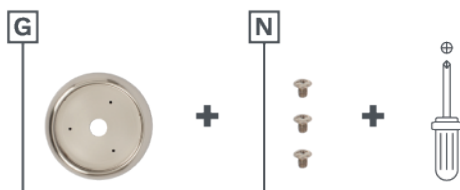


Remember that the blades are reversible, choose the colour that you like best and put them facing downwards. Then insert one blade **E** in one of the grooves of piece **H** until it is positioned correctly.

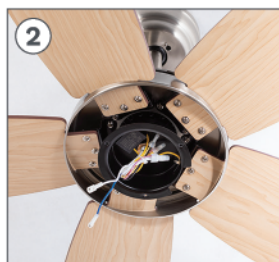


Once you have placed a blade **E**, screw it in with 3 of the screws from step 1. Repeat the step with the 4 remaining blades making sure that they are perfectly attached.

STEP 6. PLACING THE DECORATIVE ELEMENT



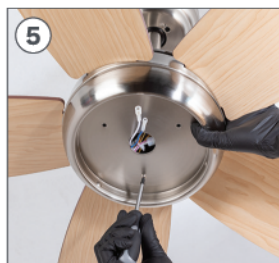
With a screwdriver remove the 3 central screws of the motor to use them later.



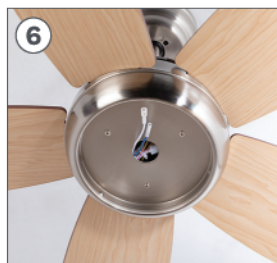
Pass the motor wires through the center hole of piece **G**.



Place piece **G** aligning its holes with the holes in the motor.



Leave the blue and white wires hanging out from the central hole and then firmly tighten the screws removed in step 1 so that piece **G** is properly attached.



OPTION WITH LED KIT

STEP 7. LED PLATE CONNECTION

D



Connect the wires in piece **D** to those of the fan joining the connections, each wire with the same colour.

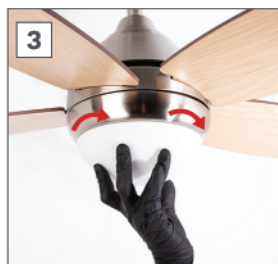


Then attach piece **D** to piece **G** with the help of the magnets to hold it.

OPTION WITH LED KIT

STEP 8. PLACING THE LAMP COVER

F



Place piece **F** on the fan by fitting it into the motor and fix it by turning clockwise. Do not forget to check that piece **G** fits well. Once checked, you can connect the electricity and enjoy your new fan with light.



OPTION WITHOUT LED KIT

STEP 7. PLACING THE DECORATIVE COVER



Place the screw in the center of piece P and screw it until it is well tightened.



Place piece P in the hole on the main body of the fan turning it until it is secured. Then, you can connect the electricity and enjoy your new fan.



BLADE BALANCING KIT



Your ceiling fan may have blade swing problems when in operation due to irregularities in the blades or brackets. Also, incorrect system mounting or crooked bearings could cause additional problems. The following procedure is recommended to remedy these problems:

1. Make sure the blades are firmly screwed to their brackets.
2. Make sure all blades are firmly secured to the center swivel casing and check the inclination of the blade mounts, they should all be the same.
3. Standing under the fan and looking up, check that none of the blade supports are bent so that none of the blades are misplaced. You can correct the position of the blade holders by gently bending them to the correct position.
4. You can check the height of the blades with a simple school ruler. Place the ruler against the ceiling vertically and level with the outside of the blade tip. Check the distance from the blade tip to the ceiling, carefully rotate the blades by hand and check the rest of the blades. If the blades are not aligned, you can carefully bend the blade holder up or down slightly to align with each other.

If the balance problem is not solved even by following the steps above, you must perform a dynamic balance check using the kit provided. Follow the procedure below:

1. Turn on the fan and set the speed at which the most sway is created (usually this occurs at the highest speed).
2. Turn off the fan. Select a blade and place the balancing clip, midway between the bracket and the tip, on the rear edge of the blade.
3. Turn on the fan. Wait to see if the sway has improved or worsened. Turn the fan off again and attach the clip to another blade to retest. Repeat this process with all the blades and check which one has improved the most.
4. Place the clip on the blade that has improved the most. Move it in or out of the blade and run the fan to find the best position where the clip offers the greatest roll improvement.
5. Then remove the clip and install a balancing weight on top of the blade on the center line near the position where the clip was placed. Use a knife or blade if necessary to separate the weights.

Caution: Stand at a safe distance from the blades. If for any reason the clip has not been properly secured, you could be injured.

[illegible]

CREATE