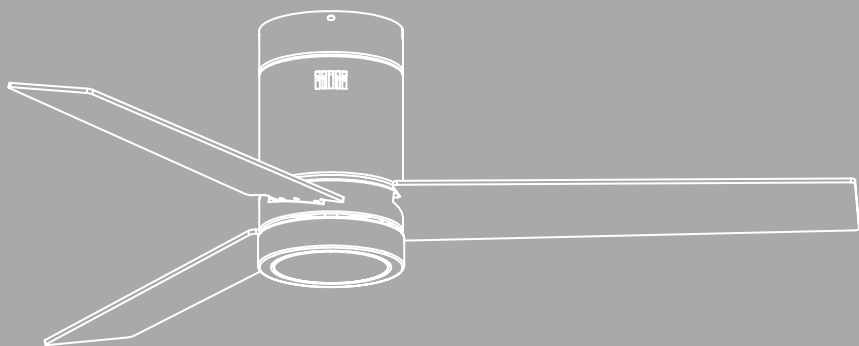


CREATE

WIND MINIMAL



CEILING FAN WITH LIGHT

MANUAL ASSEMBLY

[illegible]

[illegible]



EN

To download this user guide in your language, visit our website:
www.create-store.com/uk



ES

Para descargar el manual en su idioma, visite nuestra web:
www.create-store.com/es



PT

Para baixar o manual no seu idiomas, visite nosso site:
www.create-store.com/pt



FR

Pour télécharger le manuel dans votre langue, visitez notre site Web:
www.create-store.com/fr



IT

Per scaricare il manuale nella sua lingua, visitare il nostro sito Web:
www.create-store.com/it



DE

Um das Handbuch in Ihrer Sprachen herunterzuladen, besuchen Sie unsere Website:
www.create-store.com/de



NL

Bezoek onze website om de handleiding in uw taal te downloaden:
www.create-store.com/nl



PL

Aby pobrać instrukcję w swoim języku, odwiedź naszą stronę internetową:
www.create-store.com/pl



INDEX

Box contents	6
Step 1. Wood roof	7
Step 1. Concrete ceiling	8
Step 1. False ceiling	10
Step 2. Driver connection	11
Step 3. Anchor the motor to the ceiling	13
Step 4. Blade assembly	14
Step 5. Fitting the trim	15
Step 6. led board connection	16
Step 7. Placement of the lampshade	17
Blade balancing kit	18

BOX CONTENTS

A



DRIVER

B



REMOTE CONTROL

C



LED PLATE

D



(x3) BLADES

E



TULIPA

F



EMBELLISHER

G



ENGINE

H



MOUNTING SUPPORT

I

(1) EXPANSION SCREWS



(2) WOOD SCREWS



J



SCREWS FOR
TRIM + ENGINE

K



BALANCING KIT

L



SPLICING TERMINALS

M



BASE SCREWS + MOTOR

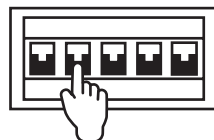
N



BLADE SCREWS

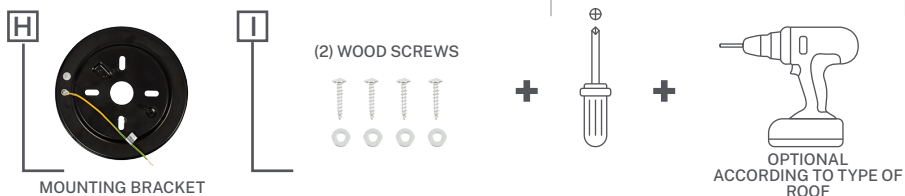


ATTENTION! Before starting the assembly, remember to disconnect the light from the electrical panel so as not to suffer an electric shock.



STEP 1. WOOD ROOF

PARTS AND TOOLS



Mark with a pencil the 4 holes of piece **H** on the ceiling.



If necessary, depending on the type of ceiling, you will need to use a drill to make the holes in the wood.



Place the washer and then the screw **I2** with the help of the screwdriver.



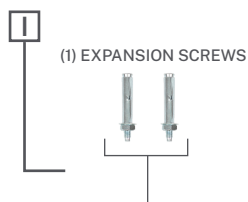
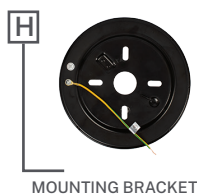
Repeat this step for the remaining 3 holes.



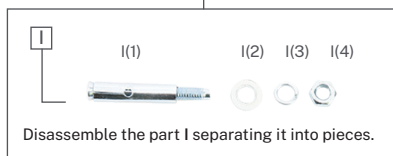
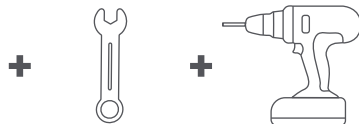
Make sure that piece **H** is perfectly hooked to the ceiling with the screws well tightened.

STEP 1. CONCRETE CEILING

PARTS AND TOOLS



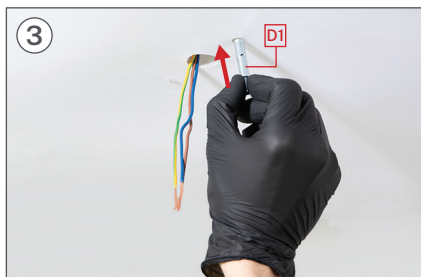
MATERIAL NOT INCLUDED



Mark 2 parallel holes on the ceiling with a pencil using piece H as a guide.



Using a drill, make the two corresponding holes with a Ø8 mm drill bit.



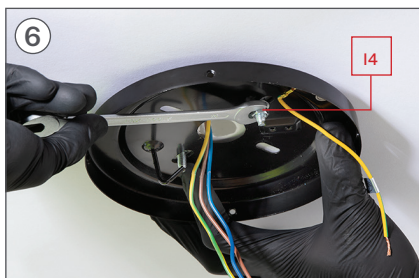
Insert the pieces I1 in the holes of the ceiling.



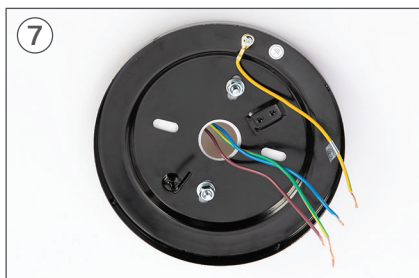
Place piece H matching its holes with the screws I. Make sure the ceiling wires pass through the center hole of piece H.



Insert piece I2, I3 and the nut I4 following this order.



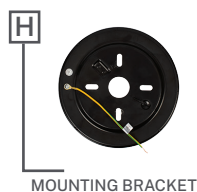
Tighten piece I4 with a number 10 wrench, until they are well fixed.



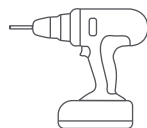
Make sure that piece H is perfectly hooked to the ceiling.

STEP 1. FALSE CEILING

PARTS AND TOOLS



MATERIAL NOT INCLUDED



Mark 2 parallel holes on the ceiling with a pencil using piece H as a guide.



With the help of a drill, make the two corresponding holes.



Insert the fixing screws into the holes and make sure the lever opens.



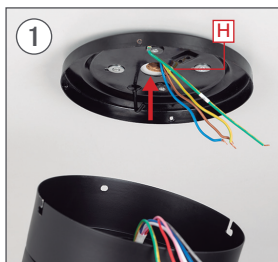
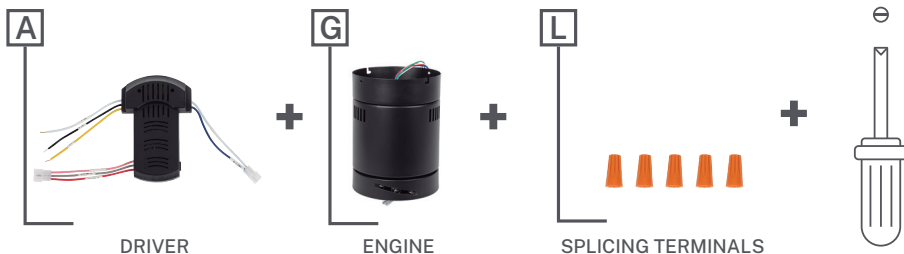
Place piece H and screw the fixing screws to the false ceiling.



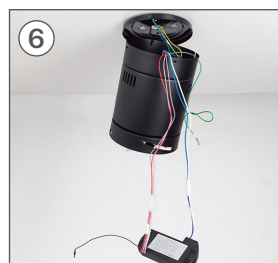
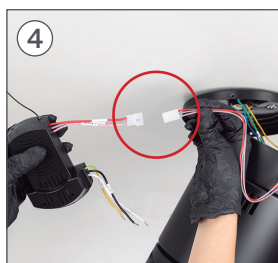
Make sure that piece H is perfectly attached to the ceiling.

STEP 2. DRIVER CONNECTION

PARTS AND TOOLS



Insert the piece hook **H** in a hole in the piece **G** so that the motor hangs and facilitates the connection of the cables.



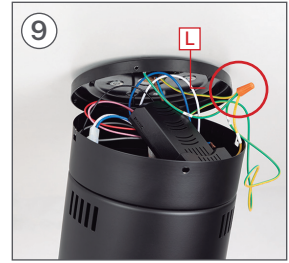
Join the part connections **G** with those of the piece **A**, each with its corresponding color.



Insert the piece **A** inside the piece **G**, As shown in the picture.



Select and connect all the ground cables, including the one for your installation.



Once connected, place the part **L** screwing it on until it is secure.



Connect the **NEUTRAL** cable of the driver (**AC-N**) to the **NEUTRAL** cable of your installation.



Once connected, place the part **L** screwing it until it fits



Connect the **PHASE** cable of the driver (**AC-L**) to the **PHASE** cable of your installation.

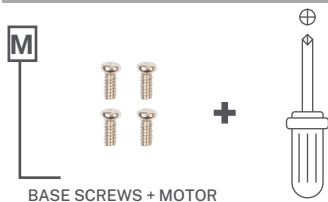


Once connected, place the part **L**.



Make sure there are no coiled cables or elements out of place.

STEP 3. ANCHOR THE MOTOR TO THE CEILING



use 2 screws **M** and screw them, without tightening them too much, into the parallel holes of the piece **H**.



take out the piece **G** of the hook and fit it on the piece **H** without pinching any wires.

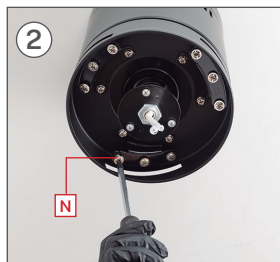
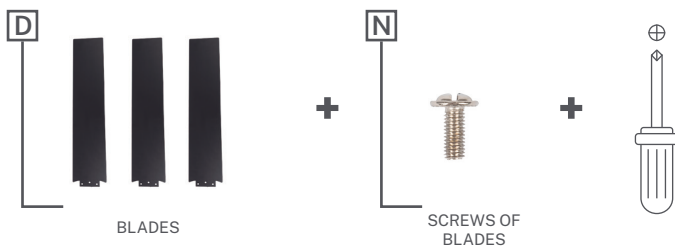


Once engaged in the hole, rotate the part **G** to the right and check that it fits correctly without pinching any cables.

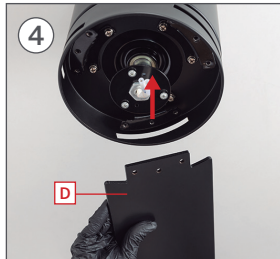


Once the piece is fitted **G**, fit the 2 **M** screws into the remaining holes by tightening them with the screwdriver. Then tighten the first 2 screws so that the motor is secure.

STEP 4. BLADE ASSEMBLY



If the screws N go in a plastic bag, go straight to step 4. If not, remove all screws N.

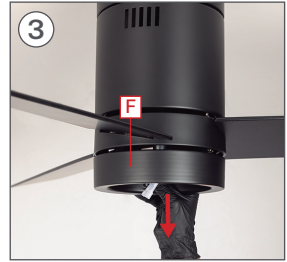
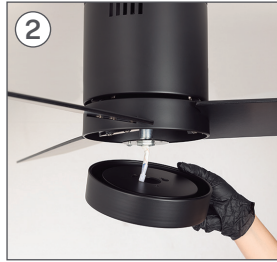
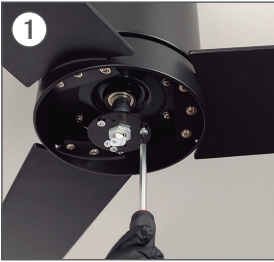
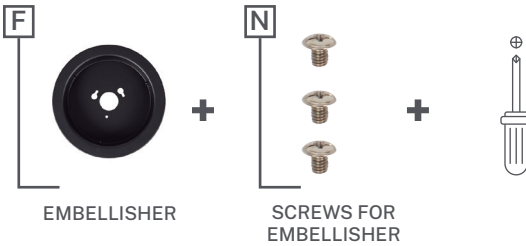


Place the first blade D fastening it with the screws N and with the help of the screwdriver, without tightening them too much.



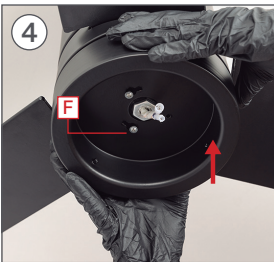
Do the same step with the second and third blade D. Once all the blades are placed D, screw all the screws well N so that the blades are well attached.

STEP 5. FITTING THE TRIM



Using a screwdriver, remove the 3 center screws from the motor for later use. If these screws come in a sealed bag, use them for this step.

Pass the fan cables through the center hole of the piece F.

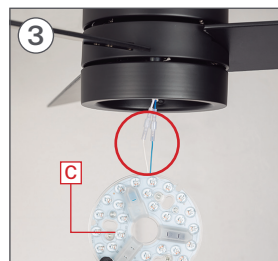
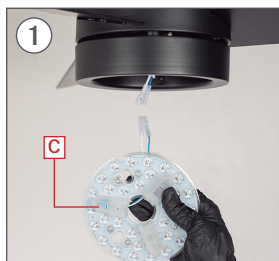
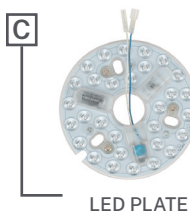


place the piece F aligning the holes with the holes in the motor.

Leave the blue and white wires sticking out of the hole, then firmly tighten the screws used in step 1 so that the piece F is properly fastened.



STEP 6. LED BOARD CONNECTION

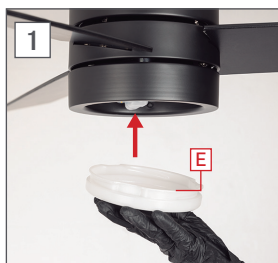


Connect the part wires C to those of the fan joining the connections, each cable with its same color.



Then attach the part C to the fan with the help of the magnets so that it stays in place.

STEP 7. PLACEMENT OF THE LAMPSHADE



Place the piece E on the fan fitting it into the trim and turn it clockwise. Do not forget to check that the piece is well secured.



Once checked, you can connect the electricity and enjoy your new fan with light.

BLADE BALANCING KIT



Your ceiling fan may have swinging problems when operating due to irregularities in the blades or brackets. In addition, incorrect mounting of the system or twisted bearings could cause additional problems. The following procedure is recommended to remedy these problems:

1. Make sure the blades are securely screwed into their brackets.
2. Make sure all the blades are securely fastened to the center swivel housing and check the pitch of the blade holders, they should all be the same.
3. Standing under the fan and looking up, check that none of the blade supports are bent, so that none of the blades are misplaced. You can correct the position of the blade holders by gently bending them to the correct position.
4. You can check the height of the blades with a ruler. Place the straightedge against the ceiling vertically level with the outside of the blade tip. Check the distance from the blade tip to the ceiling, carefully rotate the blades by hand and check the rest. If they are not aligned, you can carefully bend the bracket up or down a bit to align with each other.

If the balance problem is not solved even by following the steps above, you must perform a dynamic balance using the kit provided. Follow this procedure:

1. Turn on the fan and set the speed at which the most swing is generated (normally occurs at the highest speed).
2. Turn off the fan. Select a blade and place the balance clip midway between the bracket and the tip, on the trailing edge of the blade.
3. Turn on the fan. Wait to see if the rocking has improved or worsened. Turn off the fan again and place the clip on another blade to recheck. Repeat this process with all the blades and see which one has improved the most.
4. Place the clip on the blade that has improved the most. Move it in or out of the blade and start the fan to find the best position where the clip offers the best balance.
5. Then remove the clip and install a balance weight on top of the blade on the center line near the point where the clip was placed. Use a knife or blade if necessary to separate the weights.

Watch out: Stand at a safe distance from the blades. If the clip has not been properly secured, for whatever reason, you could be injured.

[illegible]

CREATE