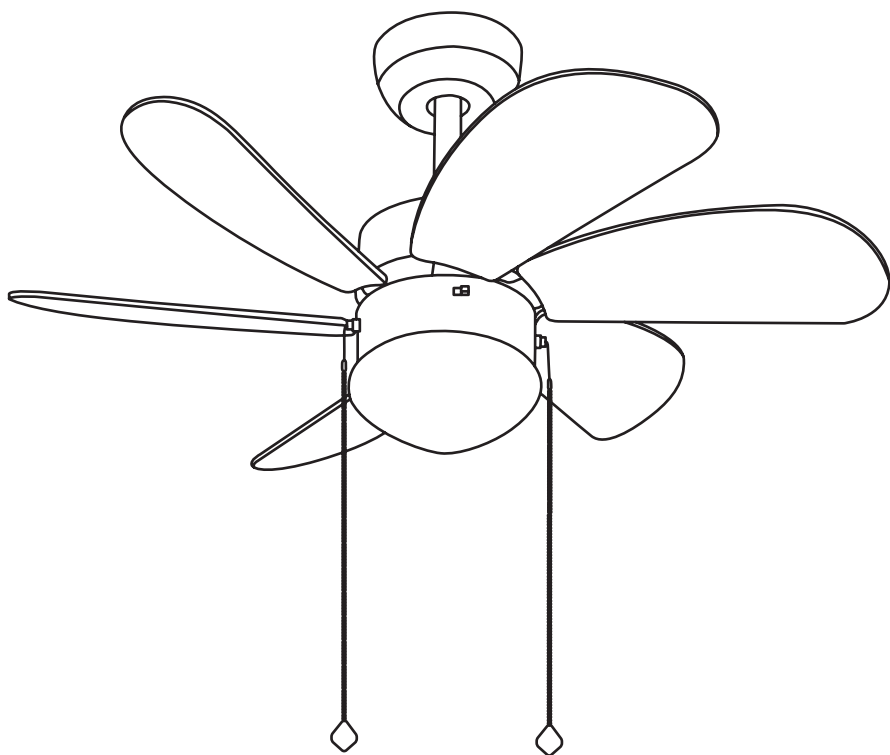


CREATE



Wind Easy

Assembly manual

[illegible]



EN

To download this user guide in your language, visit our website:
www.create-store.com/uk/



ES

Para descargar el manual en su idioma, visite nuestra web:
www.create-store.com/es/



PT

Para baixar o manual no seu idiomas, visite nosso site:
www.create-store.com/pt/



FR

Pour télécharger le manuel dans votre langue, visitez notre site Web:
www.create-store.com/fr/



IT

Per scaricare il manuale nella sua lingua, visitare il nostro sito Web:
www.create-store.com/it/



DE

Um das Handbuch in Ihrer Sprachen herunterladen, besuchen Sie unsere Website:
www.create-store.com/de/



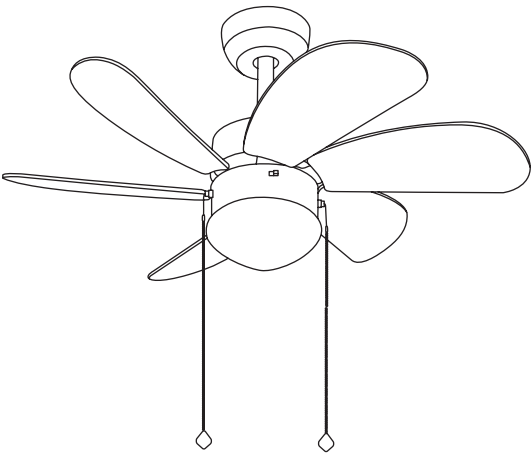
NL

Bezoek onze website om de handleiding in uw taal te downloaden:
www.create-store.com/nl/



PL

Aby pobrać instrukcję w swoim języku, odwiedź naszą stronę internetową:
www.create-store.com/pl/

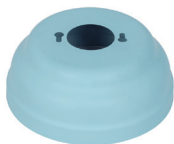


INDEX

BOX CONTENTS	5
STEP 1. WOOD CEILING	6
STEP 1. FALSE CEILING	7
STEP 1. CONCRETE CEILING	8
STEP 2. MOUNTING THE MAIN BODY	10
STEP 3. ELECTRIC CONNECTION	13
STEP 4. MOUNTING THE BLADES	15
STEP 5. PLACEMENT OF BULB AND TULIP	16
STEP 6. ASSEMBLING THE CHAINS	17
BLADE BALANCING KIT	18

BOX CONTENTS

A



FLORON

B



CHAIN (x2)

C



BLADE HITCH
(x6)

D



BLADES
REVERSIBLE (x6)

E



TULIPA

F



EMBELLISHER
THE MOTOR

G



MOTOR

H



SHANK

I



SCREWS FOR
BLADE HITCH (x12)

J



SCREWS FOR
BLADES (x18)

K



MEDIUM
MOUNTING

L

(1) EXPANSION SCREWS



(2) WOOD SCREWS



M



SPLICE TERMINALS

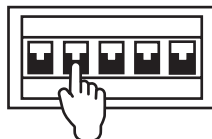
N



BALANCING KIT

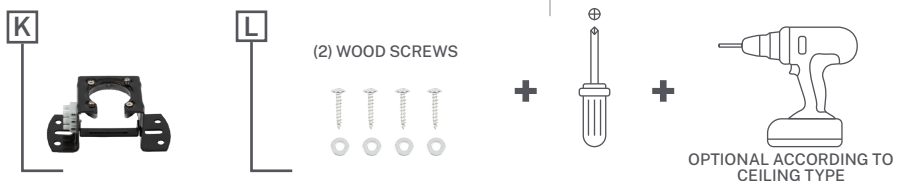


ATTENTION! Before starting the assembly, remember to disconnect the light from the electrical panel so as not to suffer an electric shock.



STEP 1. WOOD CEILING

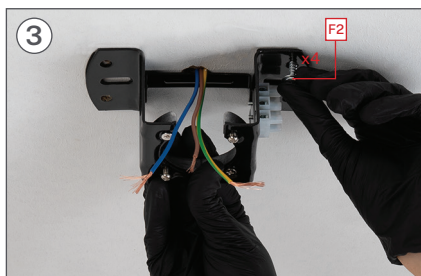
PARTS AND TOOLS



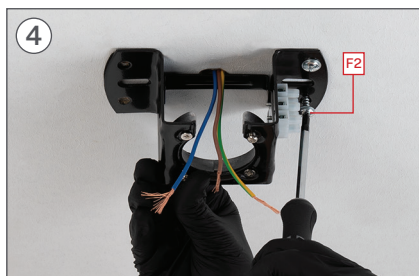
Mark with a pencil the 4 holes of piece K on the ceiling.



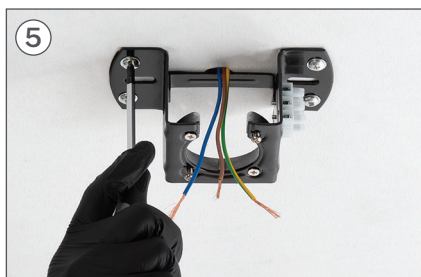
If necessary, depending on the type of ceiling, you will need to use a drill to make the holes in the wood.



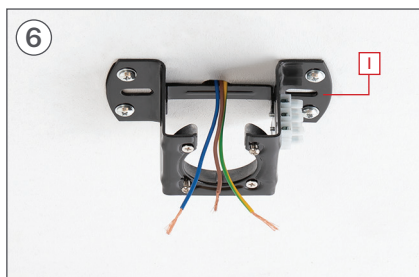
Place the washer and then the screw L2.



Using the screwdriver, tighten the screw L2.



Repeat the previous step for the remaining holes.



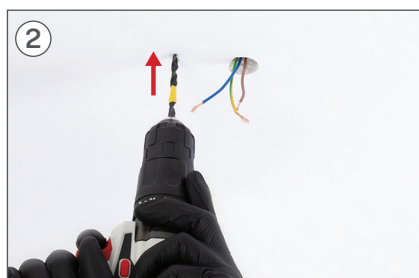
Make sure that part K is perfectly fixed to the ceiling and that no wires are trapped.

STEP 1. FALSE CEILING

PARTS AND TOOLS



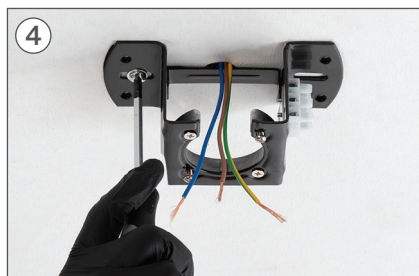
Mark on the ceiling with a pencil the 2 central holes using piece K as a guide.



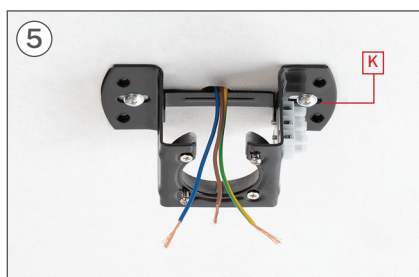
With the help of a drill, make the two corresponding holes.



Insert the fixing screws into the holes and make sure the lever opens.



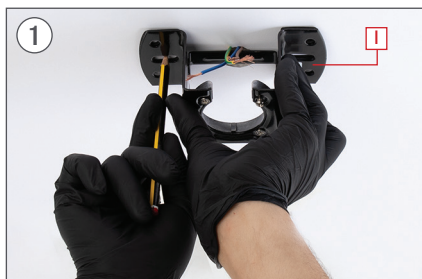
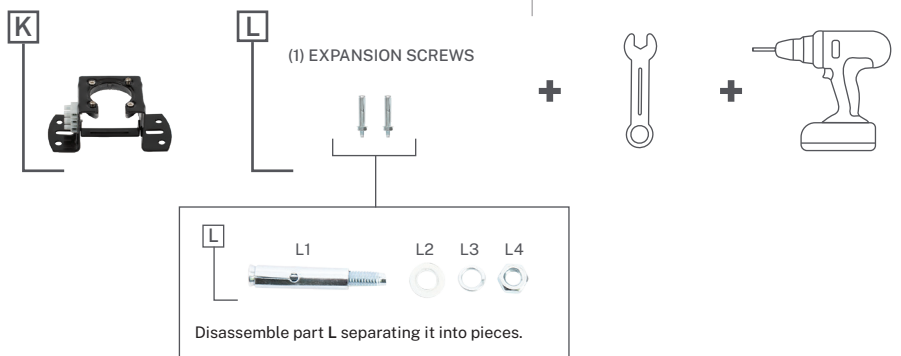
Place piece K and screw the fixing screws to the false ceiling.



Make sure that part K is perfectly attached to the ceiling to continue with the assembly.

STEP 1. CONCRETE CEILING

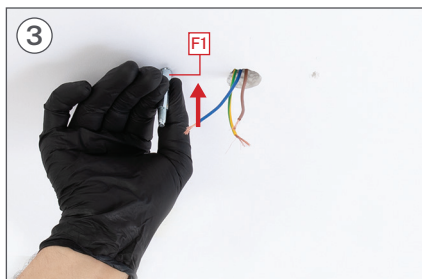
PARTS AND TOOLS



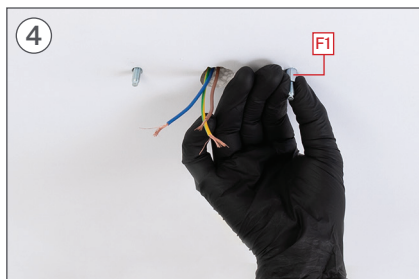
Mark on the ceiling with a pencil the 2 central holes of piece K, using the same piece as a guide.



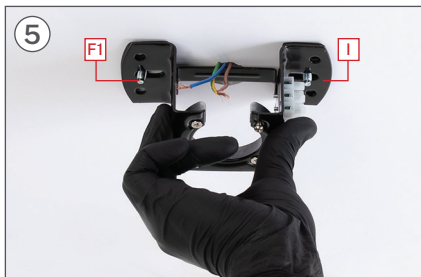
With the help of a drill, make the two corresponding holes with an Ø8 mm drill bit.



Place the pieces **L1** in the holes on the ceiling.



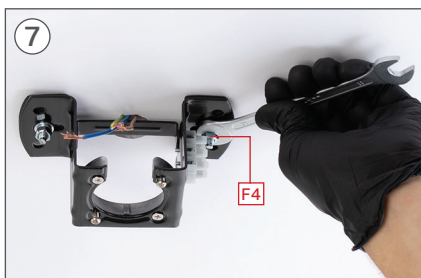
Only the thread of the screw should stick out.



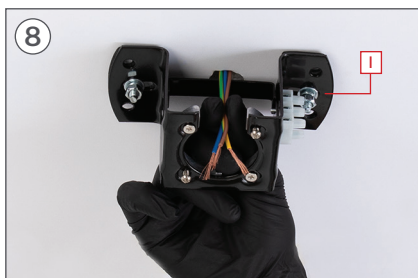
Place part K matching its holes with the screws L1. Make sure the ceiling wires are placed on one side of piece K.



Insert pieces L2, L3 and subsequently the nut L4.

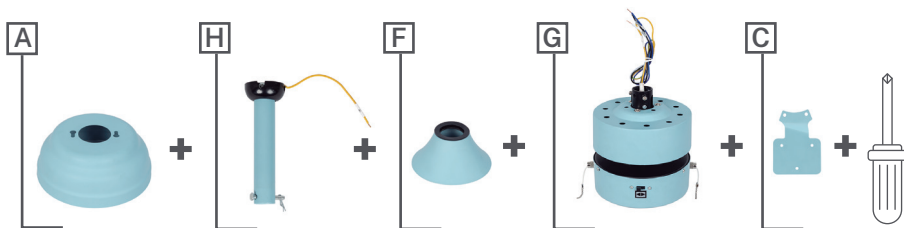


Tighten piece L4 with a # 10 wrench, until you feel that it is well fixed.



Make sure that piece K is perfectly hooked to the ceiling and that no wires are trapped.

STEP 2. MOUNTING THE MAIN BODY



Remove pin from part H.



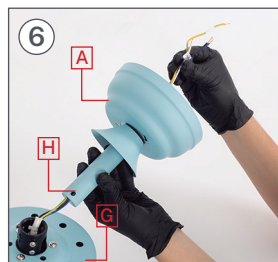
Enter the bar H through the hole in the part A as the pictures show.



Insert the part F As shown in the picture.



Once the pieces are inserted A and F, you must insert the cables of the part G inside the bar. If you want, you can tape the wires down to make it easier to route them inside the bar.





With the help of a screwdriver, remove the 2 screws from the top of the piece G.



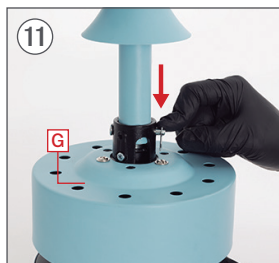
Insert the bar at the top of the piece G.



Make sure no wires are pinched.



Once the bar is inserted, place the pin of the piece H so that it matches the hole in the bar.



Place the locking piece on the pin so that it does not come off.



Then replace the two screws so that the bar is fully supported.



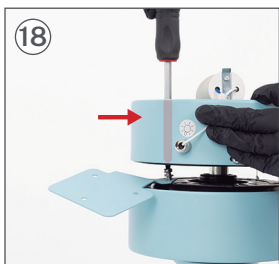
Once the bar is well anchored to the piece G, slide piece F down. The main frame of the fan motor will remain assembled.



Align the hook of the blades with the holes located in the hole of the piece G. Make sure that the inclination of the part C face down as shown in the picture.



Then align the hole in the motor to screw the part C.



Make sure the part C is securely attached.

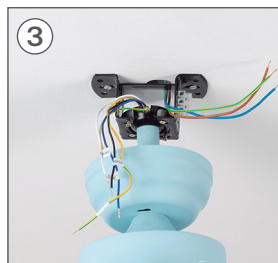
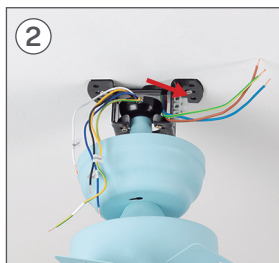
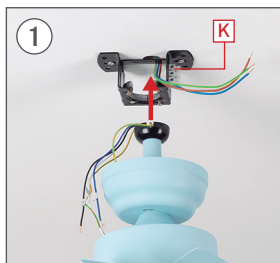
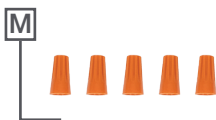


Repeat the same step with the rest of the blade hooks (x6)

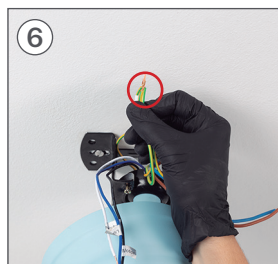
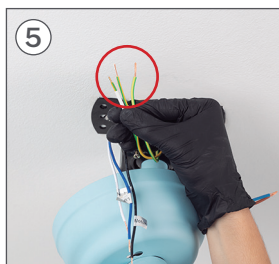
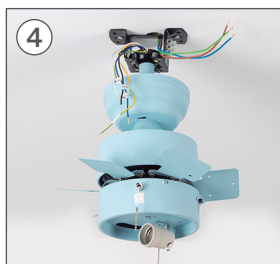


Once in place, make sure all parts are properly attached.

STEP 3. ELECTRIC CONNECTION

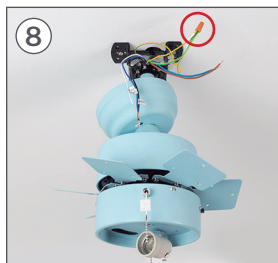
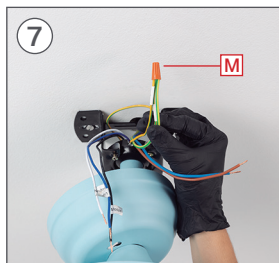


Place the seatpost camber bracket into the slot on the part **K** so that it is attached to the ceiling. Remember to put the notch on the black top back so that the piece fits well.

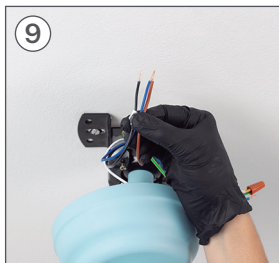


Before continuing, check that the center frame is properly positioned so that it does not fall.

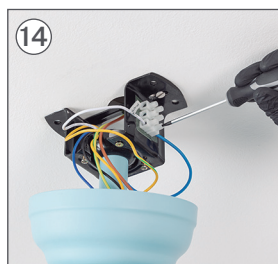
Connect the part ground wire **H** to the motor (**G**). In addition, if your electrical installation consists of your own grounding cable, also connect it to the cables of the part **H** and the engine (**G**).



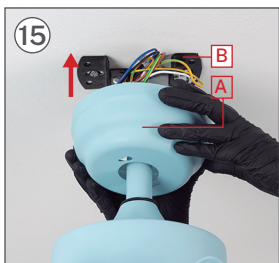
Once connected, place the part **M** screwing it in until it is well attached.



Connect the Phase wire (F) with the black wire (motor) and the blue wire (lamp). Once connected, place the part M screwing it in until it is well attached.

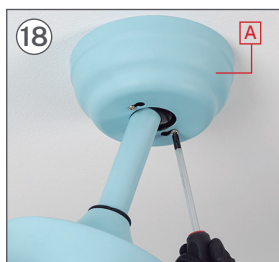


Once the cables are secure, connect the white (Neutral) cable from the part G to the Neutral cable of your electrical installation, joining them in the terminal strip of the part K with the help of a flat screwdriver.



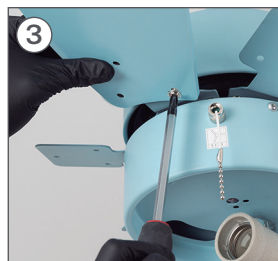
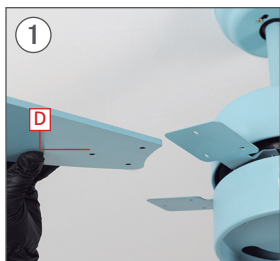
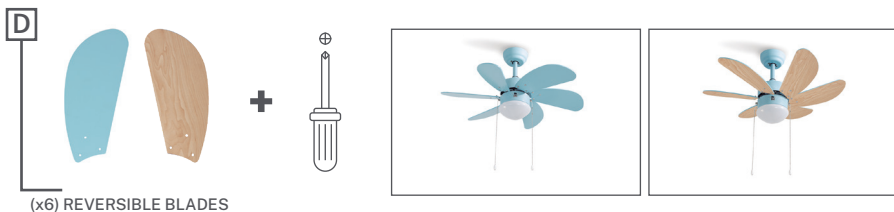
Slide part A up to fit the screws protruding from the part K.

Once they are fitted, turn the piece A to the right.

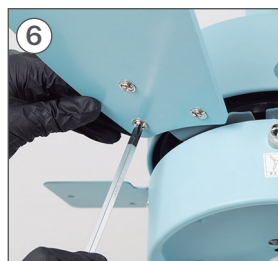
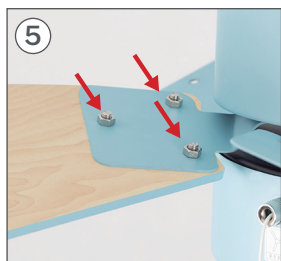
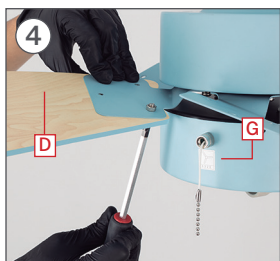


Finally, with the help of a screwdriver, tighten the screws so that the piece is well fixed.

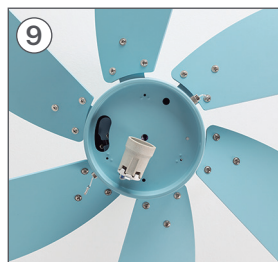
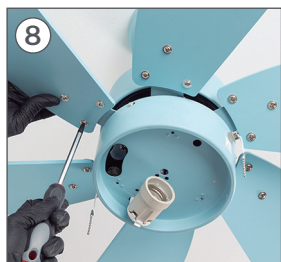
STEP 4. MOUNTING THE BLADES



Remember that the blades are reversible, choose the color that you like best and put it facing downwards, then place the blade **D** under the blade hook until the holes fit.

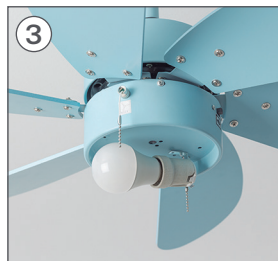


Place the thread on the top of the blade hitch and screw in the screw from the bottom of the blade until it is slightly snug. Repeat the same step with the other 2 remaining screws and threads. Once in place, fully tighten the 3 blade screws.

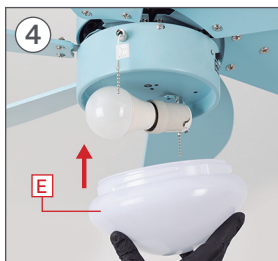


Repeat the previous step for each of the remaining blades.

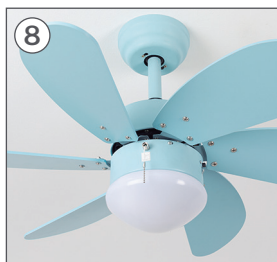
STEP 5. PLACEMENT OF BULB AND TULIP



Place a compatible bulb in the socket and screw it in clockwise until it is properly seated.

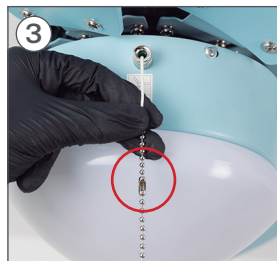
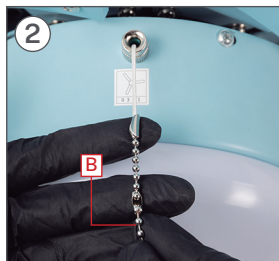


Place the part E on the fan by fitting it into the motor and fix it by turning clockwise.

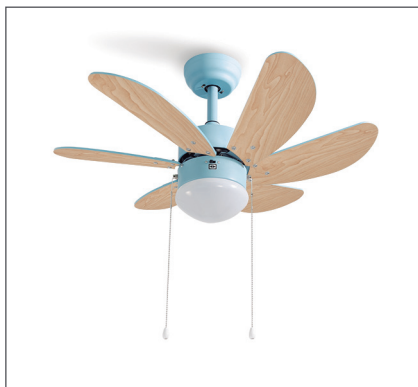


Do not forget to check that the part E fits well.

STEP 6. ASSEMBLING THE CHAINS



Hook the pin on the end of the chain into the slot and pull the chain out to lock it. Later, you can connect the electricity and enjoy your new fan.



BLADE BALANCING KIT



Your ceiling fan may have blade swing problems when in operation due to irregularities in the blades or brackets. Also, incorrect system mounting or crooked bearings could cause additional problems. The following procedure is recommended to remedy these problems:

1. Make sure the blades are firmly screwed to their brackets.
2. Make sure all blades are firmly secured to the center swivel casing and check the inclination of the blade mounts, they should all be the same.
3. Standing under the fan and looking up, check that none of the blade supports are bent so that none of the blades are misplaced. You can correct the position of the blade holders by gently bending them to the correct position.
4. You can check the height of the blades with a simple school ruler. Place the ruler against the ceiling vertically and level with the outside of the blade tip. Check the distance from the blade tip to the ceiling, carefully rotate the blades by hand and check the rest of the blades. If the blades are not aligned, you can carefully bend the blade holder up or down slightly to align with each other.

If the balance problem is not solved even by following the steps above, you must perform a dynamic balance using the kit provided. Follow the procedure below:

1. Turn on the fan and set the speed at which the greatest sway is created (usually occurs at the highest speed).
2. Turn off the fan. Select a blade and place the balancing clip, midway between the bracket and the tip, on the rear edge of the blade.
3. Turn on the fan. Wait to see if the sway has improved or worsened. Turn the fan off again and attach the clip to another blade to retest. Repeat this process with all the blades and check which one has improved the most.
4. Place the clip on the blade that has improved the most. Move it in or out of the blade and run the fan to find the best position where the clip offers the greatest roll improvement.
5. Then remove the clip and install a balancing weight on top of the blade on the center line near the point where the clip was placed. Use a knife or blade if necessary to separate the weights.

Watch out: Stand at a safe distance from the blades. If the clip has not been properly secured, for any reason, you could be injured.

[illegible]

CREATE